

# nifty

# HR21

## SELF PROPELLED ACCESS PLATFORM



**20.70m (68ft)**  
Working height

**12.60m (41ft 4in)**  
Unrestricted working  
outreach at 225kg

**45% Gradeability**  
4WD for rough terrain

**GVW Only 6,220kg**  
Lightest in its class

**Superb Manoeuvrability**  
4m outside turning radius

**Unique Suspension System**  
Improving traction & comfort

**Swing-Out Engine Tray**  
Quick & easy to service

**Platform Rotation  
& Fly-Boom**  
Improved access to  
applications



[niftylift.com](http://niftylift.com)

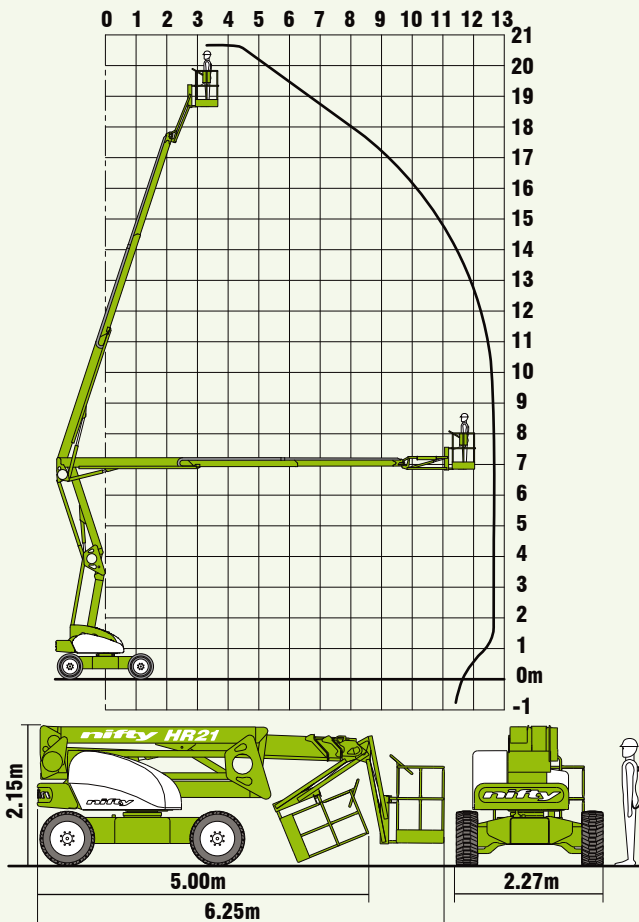


# nifty Height rider 21

The Nifty **Height Rider 21 (HR21)** is available with 2 or 4-wheel-drive (2WD or 4WD). The **2WD** version offers Nifty's versatile Bi-Energy option combining battery with Diesel power for ultimate flexibility and maximised utilisation. The **4WD** version delivers superb traction through its unique suspension and powerful motors. Both combine innovative weight and space saving design with an excellent turning circle for better manoeuvrability on-site and lower transportation costs. Proportional controls deliver smooth, measured operation while platform rotation and fly-boom allow precise positioning anywhere in its vast working envelope.

## SAFETY FEATURES

- Automatic Failsafe Brakes
- Tilt Alarm
- Foam Filled Tyres
- Manual Recovery with Hand Pump
- Dual Controls (Platform & Base)
- Lock Valves on all Hydraulic Cylinders
- Dual Harness Points
- CE Mark



The **HR21** offers exceptional outreach. Whether it be up-and-over access to awkward locations or outreach to jobs below ground level. The **HR21** does it all still leaving plenty of space in the platform for tools and equipment.

## SPECIFICATIONS

|                                |  |                    |
|--------------------------------|--|--------------------|
| <b>Working Height</b>          | 20.70m   | 68ft               |
| <b>Platform Height</b>         | 18.70m   | 61ft 4in           |
| <b>Working Outreach</b>        | 12.60m   | 41ft 4in           |
| <b>Slew</b>                    | 360°   |                    |
| <b>Fly-Boom Arc</b>            | 150°   |                    |
| <b>Width</b>                   | 2.27m  | 7ft 5in            |
| <b>Height</b>                  | 2.15m  | 7ft                |
| <b>Length - Stowed</b>         | 5.00m  | 16ft 5in           |
| <b>- Overall</b>               | 6.25m  | 20ft 6in           |
| <b>Minimum Weight - (2x4)</b>  | 6,220kg*                                       | 13,700lbs*         |
| <b>- (4x4)</b>                 | 6,220kg*                                       | 13,700lbs*         |
| <b>Turning Radius - Inside</b> | 0.78m  | 2ft 7in            |
| <b>- Outside</b>               | 4.00m  | 13ft               |
| <b>Platform Rotation</b>       | 100°   |                    |
| <b>Platform Capacity</b>       | 225kg  | 500lbs             |
| <b>Platform Size</b>           | 1.80m x 0.70m                                  | 5ft 11in x 2ft 4in |
| <b>Drive Speed - (2x4)</b>     | 4.5kph   | 2.8mph             |
| <b>- (4x4)</b>                 | 6.6kph   | 4.1mph             |
| <b>Gradeability</b>            | 30% (2x4)                                      | 45% (4x4)          |
| <b>Power System - (2x4)</b>    | Battery Only                                   |                    |
|                                | Bi-Energy (Battery & Diesel) Kubota 722 (18Hp) |                    |
| <b>- (4x4)</b>                 | Diesel Only Kubota 1505 (32Hp)                 |                    |

\* Weights may vary according to specification, please confirm before ordering.

Due to a policy of continuing development and improvement, Niftylift reserves the right to change any specification without notice. Please confirm exact specification before ordering.

**DAVIS**  
**Access**

Telephone: 0117 967 0811  
Email: [info@davisaccess.co.uk](mailto:info@davisaccess.co.uk)  
Web: [www.davisaccess.co.uk](http://www.davisaccess.co.uk)